

IDES 2023 Overview: Sierra Leone

4th July 2024





Impact Capital
for Development

The Inclusive Digital Economy Scorecard (IDES)

Strategic performance tool with the objective of easily measuring and tracking the level of development of an inclusive digital economy at the country level.



MEASURE AND TRACK

the development of inclusive digital economies



IDENTIFY

key market constraints



HELP SET

the right priorities

INCLUSIVENESS

Women

Youth

Elders

Refugees

Migrants

MSMEs

Disabled

Rural inhabitants

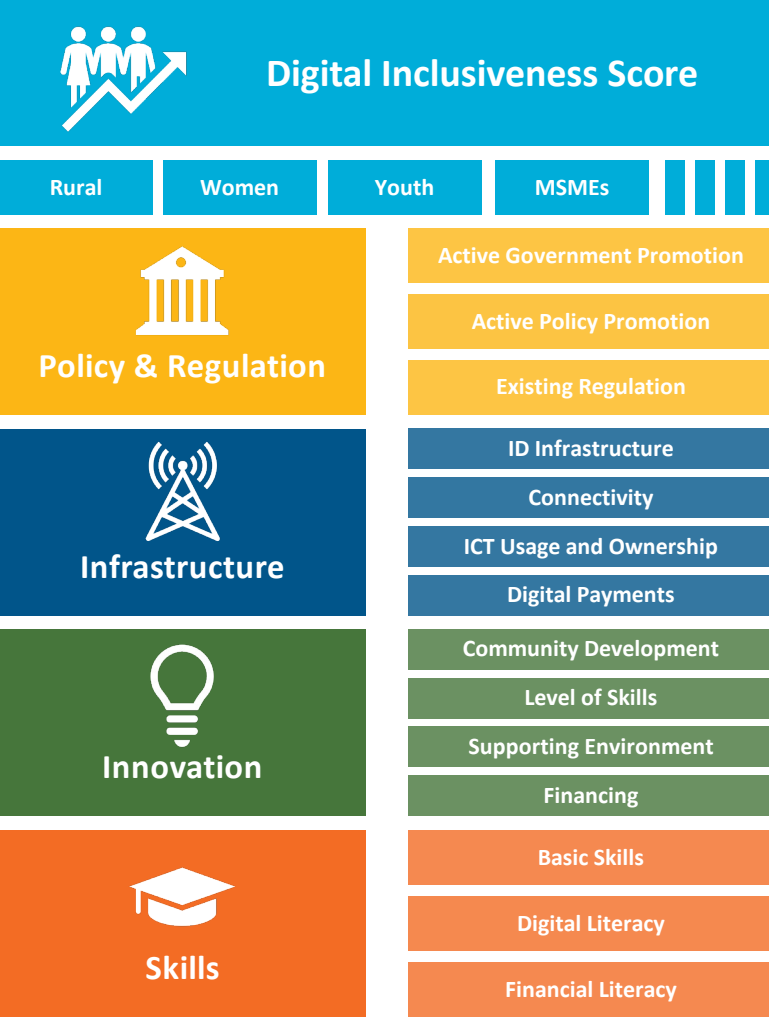
“It’s not a paper you’ve produced, it’s an actionable process to provoke what needs to happen.” – Minister _ Zambia

“The IDES tool is playing a key role in informing us on what to prioritize... given that we are operating in an environment of limited resources.” - Permanent Secretary _ UG

The Inclusive Digital Economy Scorecard (IDES)



Digital Economy Score



“It provides comprehensive and timely data, organized in an action-oriented way.” – Director

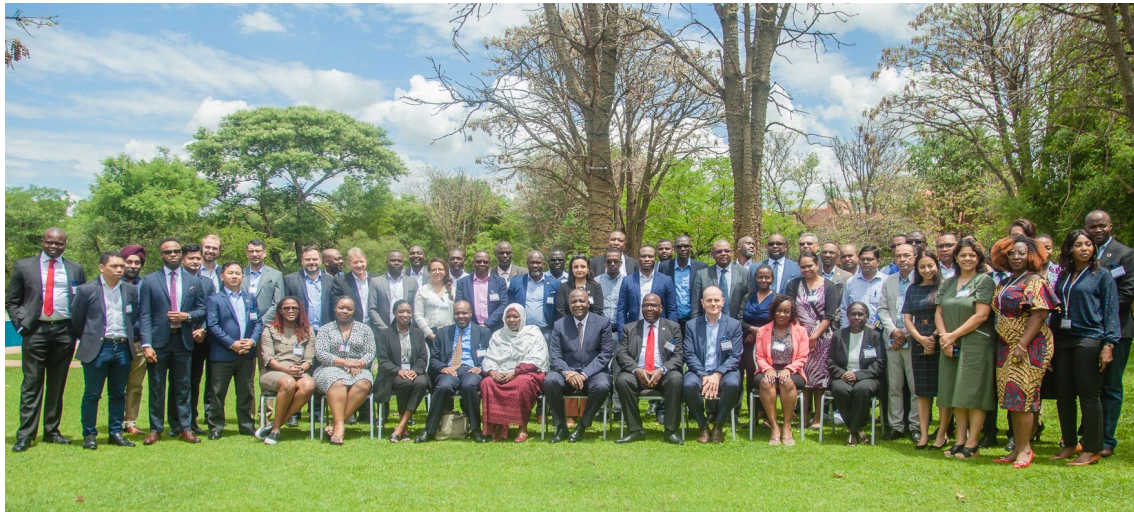
“One of the good ingredients that came out with this tool is the issue of inclusivity... it's a weak point we had.” – Director

IDES is supported by a Reference Group of like-minded organizations



IDES Community of practice

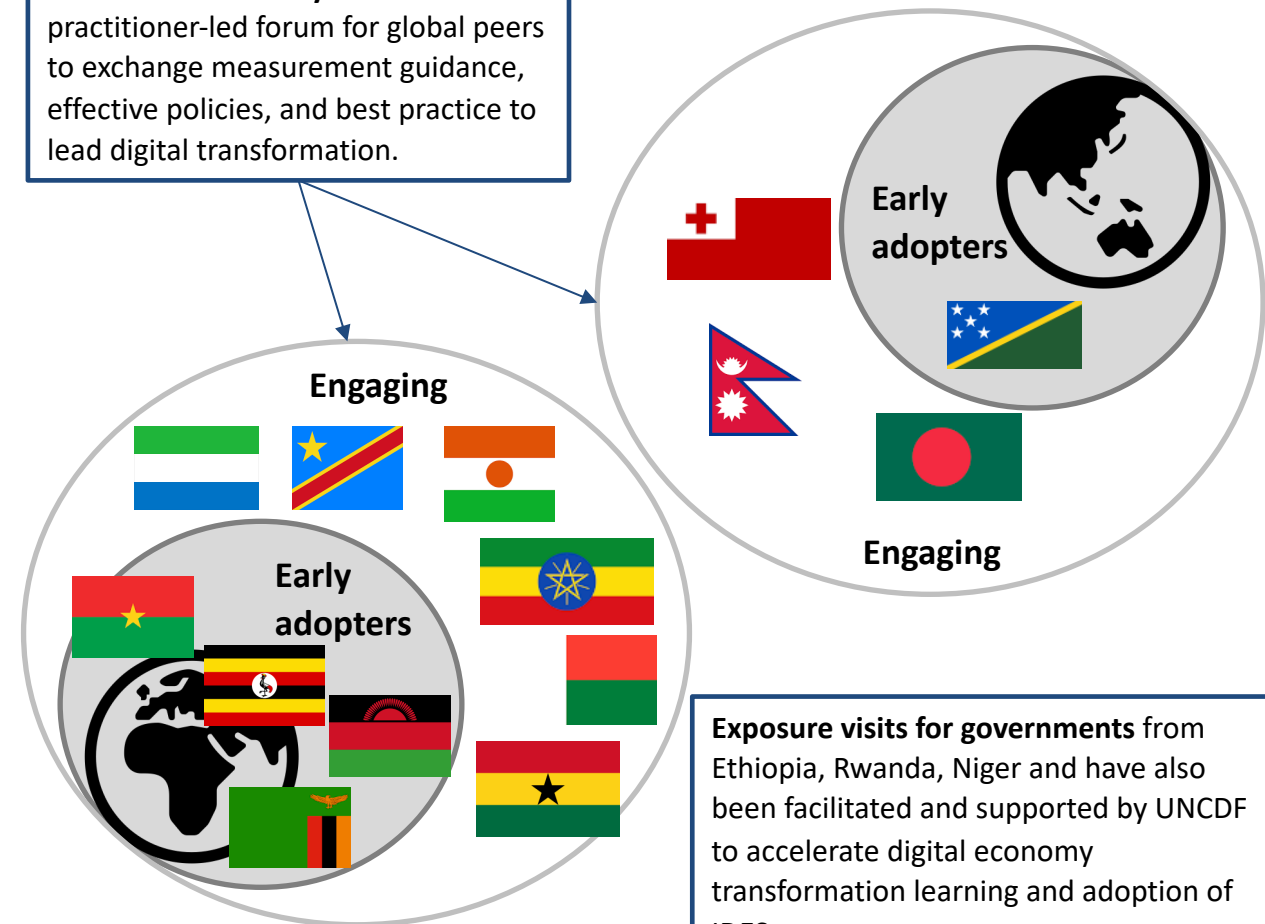
Since its launch in 2020 with 4 pilot countries (Uganda, Burkina Faso, Nepal, and the Solomon Islands), IDES is now formally adopted in 11 countries with another 22 countries engaged in its implementation in Africa, Asia, and the Pacific.



IDES Community of Practice: Close to 40 policy makers - from Central Banks and Ministries of ICT to Digital Transformation Authorities – from 13 countries recently gathered in Zambia to share how they are charting out their journey with IDES.

This growing community is unique for its focus on inclusion, and it's providing a forum for fresh thinking on approaches that work for the Global South.

The IDES Community of Practice is a practitioner-led forum for global peers to exchange measurement guidance, effective policies, and best practice to lead digital transformation.



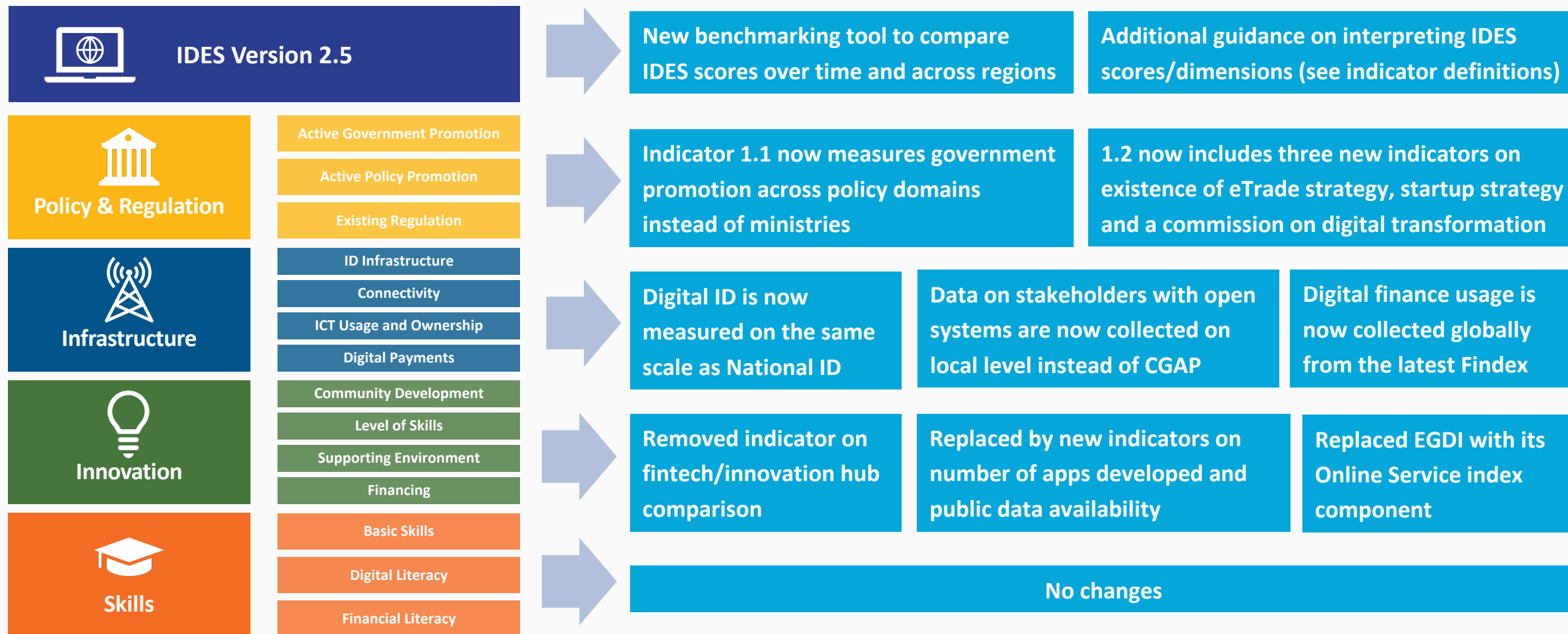
Exposure visits for governments from Ethiopia, Rwanda, Niger and have also been facilitated and supported by UNCDF to accelerate digital economy transformation learning and adoption of IDES.

IDES 2.5: What's new?



Impact Capital
for Development

Changes in new IDES version



Fundamentals of IDES



Impact Capital
for Development

Policy & Regulation



- Active Government Promotion of Digital Economy
- Regulation supporting Digital Economy



Key indicators ()

- In which policy domains does the government agencies promote DE?
- Which DE policies are promoted by government agencies?
- Which DE policies/regulations have been implemented?
- Inclusiveness indicator: Share of DE promoting agencies with *segment focus*

Fundamentals of IDES

Infrastructure



- Identity infrastructure
- Connectivity
- ICT Usage and ownership
- Digital payment ecosystem



Key indicators ()

- Names and number of relevant infrastructure stakeholders
- Can national ID be used to access services?
- Can digital ID be used for transactions?
- Number of banks and EMIs with open/interoperable payment systems
- Inclusiveness score: Number of stakeholders with segment focus & level of inclusion in ID and ICT usage/ownership

Fundamentals of IDES



Impact Capital
for Development

Innovation



- Innovation community
- Level of skills
- Supporting infrastructure
- Investment



Key indicators ()

- Qualitative assessments on growth of innovative companies, skillset of graduates, ease of finding skilled employees, venture capital availability...
- Inclusiveness score: Level of inclusion in innovation community (e.g. segment focus, systemic disadvantages, access programmes...)

Fundamentals of IDES



Impact Capital
for Development

Skills



- Basic skills
- Digital literacy
- Financial literacy



Key indicators ()

- Evidence of digital/financial literacy curricula at school/university level
- % of schools with internet access
- % Stakeholders offering digital/financial literacy training
- Existence of county-wide financial literacy campaign
- Inclusiveness score: Level of inclusion in basic skills, digital literacy and financial literacy

Fundamentals of IDES



Impact Capital
for Development

INCLUSIVENESS

Women

Youth

Elders

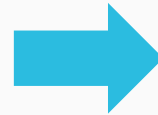
Refugees

Migrants

MSMEs

Disabled

Rural inhabitants



Inclusiveness scoring

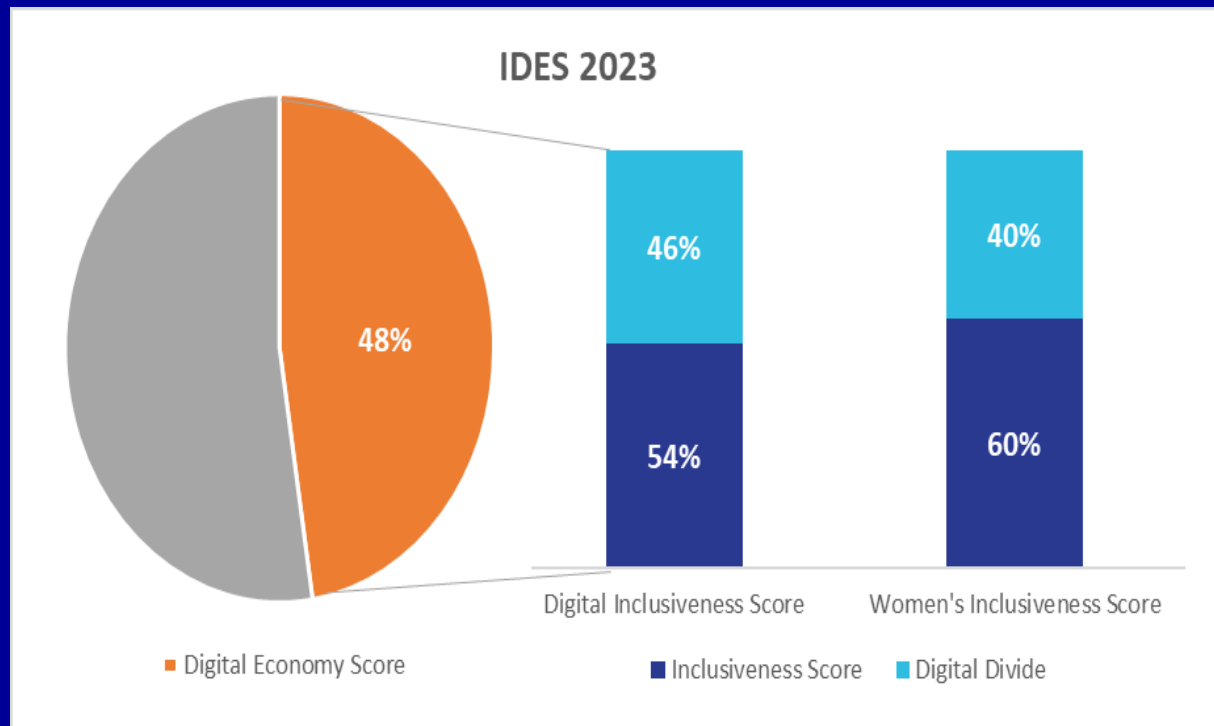
- Each IDES (sub-) section includes an inclusiveness score (1-5) to measure the level of inclusion for different segments
- Where available, the score should be based on disaggregated quant. data, otherwise on CO's own qualitative assessment
- Factors to consider: segment focus, systemic disadvantages, equal access, segment-focused trainings, policies etc.



Women inclusiveness

- Women's inclusiveness is measured differently and pre-filled with global data sources by the IDES team
- If these are not available, they should be assessed/estimated by the country team (as for other segments)
- Based on this, a gender inclusiveness score is calculated for each section and the overall IDES

IDES 2023 Sierra Leone: Overview



The Digital Economy Score (DES) (%)

indicates the level of development of the digital economy.

The Digital Inclusiveness Score (DIS) (%)

indicates the level of inclusion attained of key segments of the population

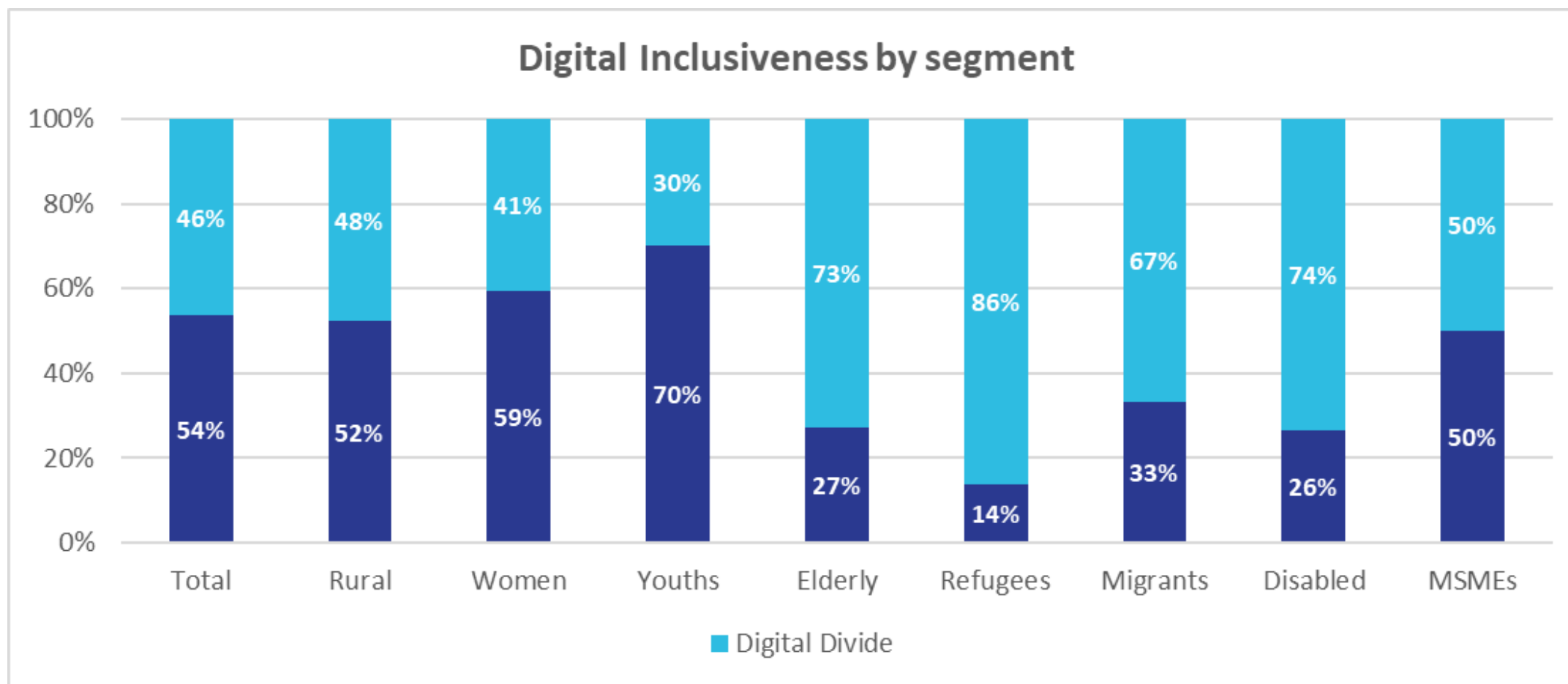
The Women Inclusiveness Score (WIS) (%)

indicates the level of inclusion of women.

IDES 2023 Sierra Leone: Digital Inclusiveness



Impact Capital
for Development

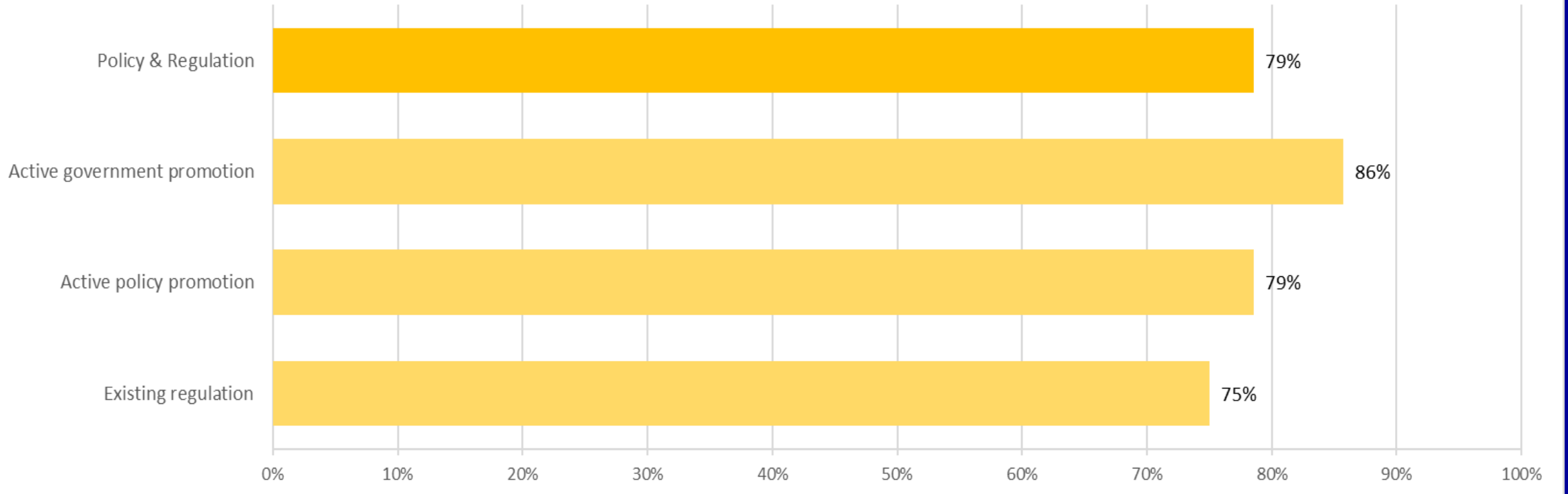


IDES 2023 Sierra Leone: DES Dimension Scores



Impact Capital
for Development

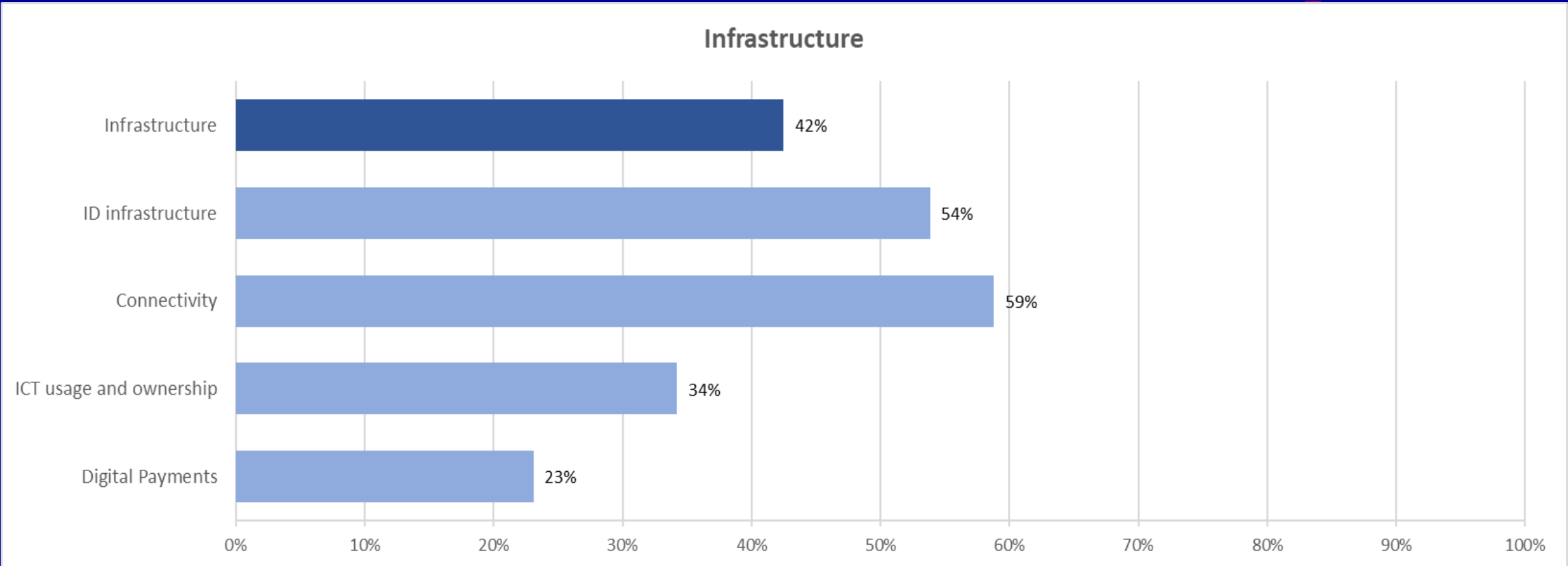
Policy & Regulation



IDES 2023 Sierra Leone: DES Dimension Scores



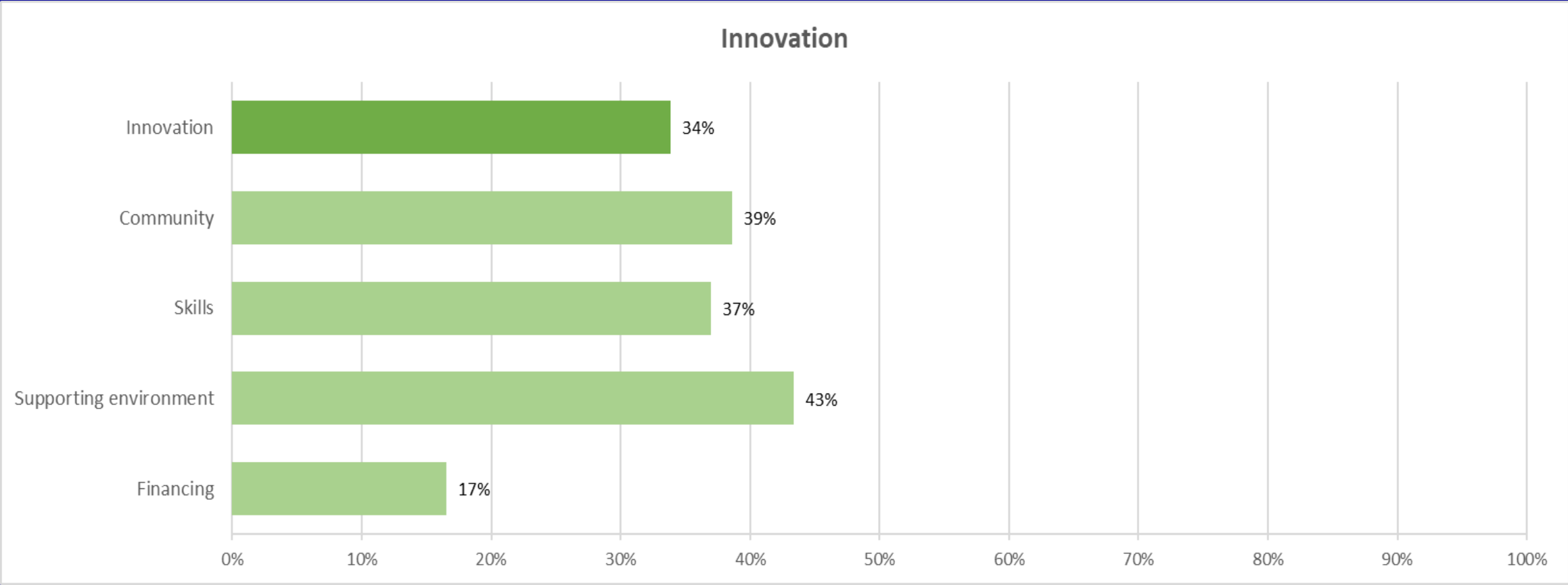
Impact Capital
for Development



IDES 2023 Sierra Leone: DES Dimension Scores



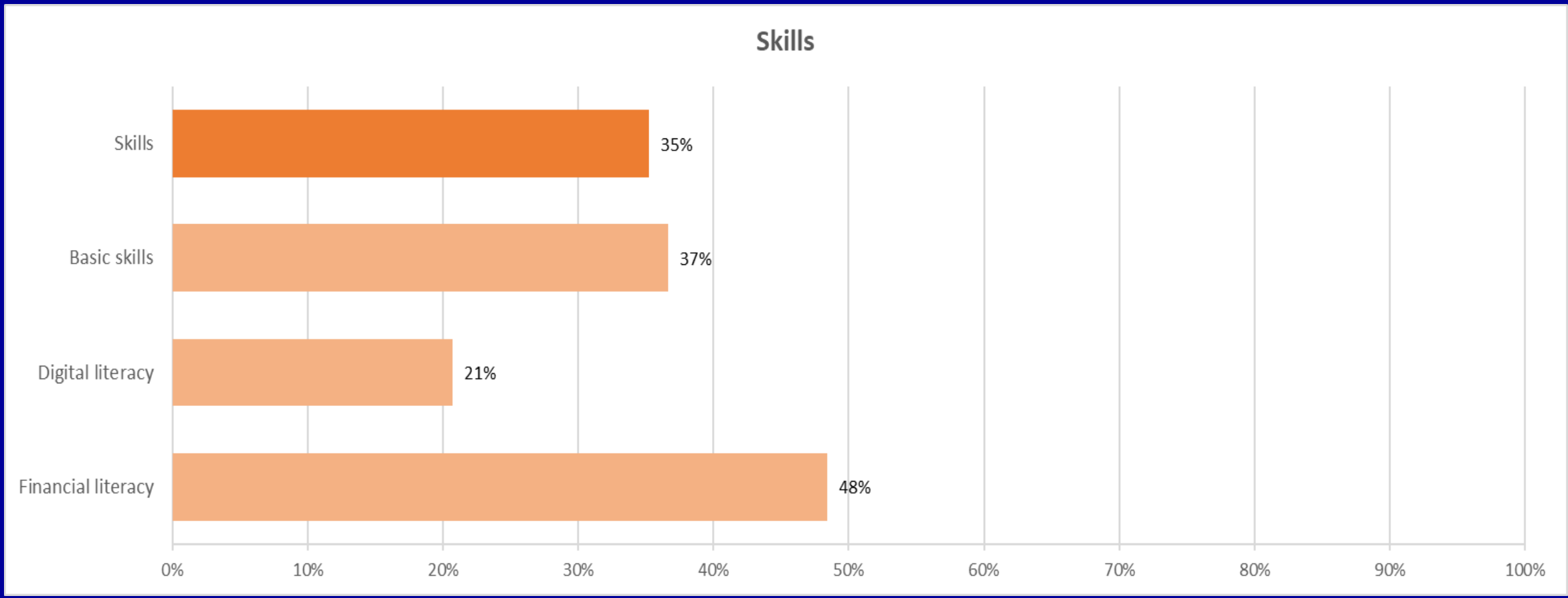
Impact Capital
for Development



IDES 2023 Sierra Leone: DES Dimension Scores



Impact Capital
for Development



IDES 2023 Sierra Leone: Evolution



Impact Capital
for Development

- 1%

2022: 55%

2023: 54%

Digital Inclusiveness Score

WIS: +2%

2022: 58%

2023: 60%

Policy & Regulation

+ 5%

2021: 73%

2022: 74%

2023: 79%

Active Government Promotion

Active Policy Promotion

Existing Regulation

Infrastructure

- 2%

2021: 44%

2022: 44%

2023: 42%

ID Infrastructure

Connectivity

ICT Usage and Ownership

Digital Payments

Innovation

-1%

2021: 31%

2022: 35%

2023: 34%

Community Development

Level of Skills

Supporting Environment

Financing

**Community development
Improved supporting environment**

Skills

+ 6%

2021: 28%

2022: 29%

2023: 35%

Basic Skills

Digital Literacy

Financial Literacy

Improved basic skills

+ 3%

2021: 44%

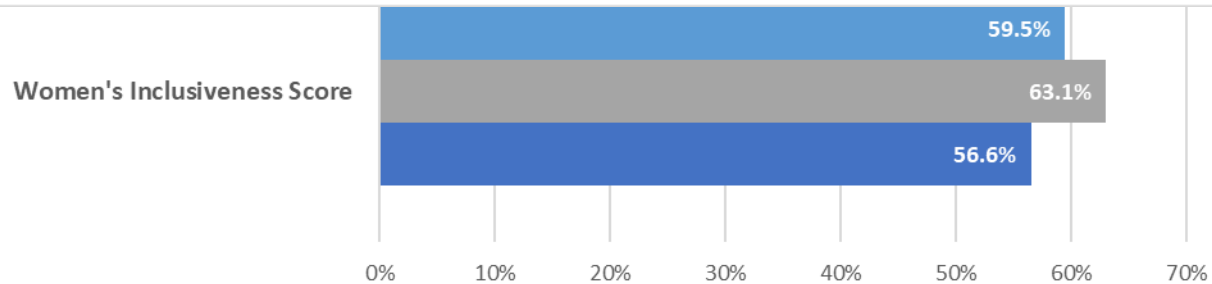
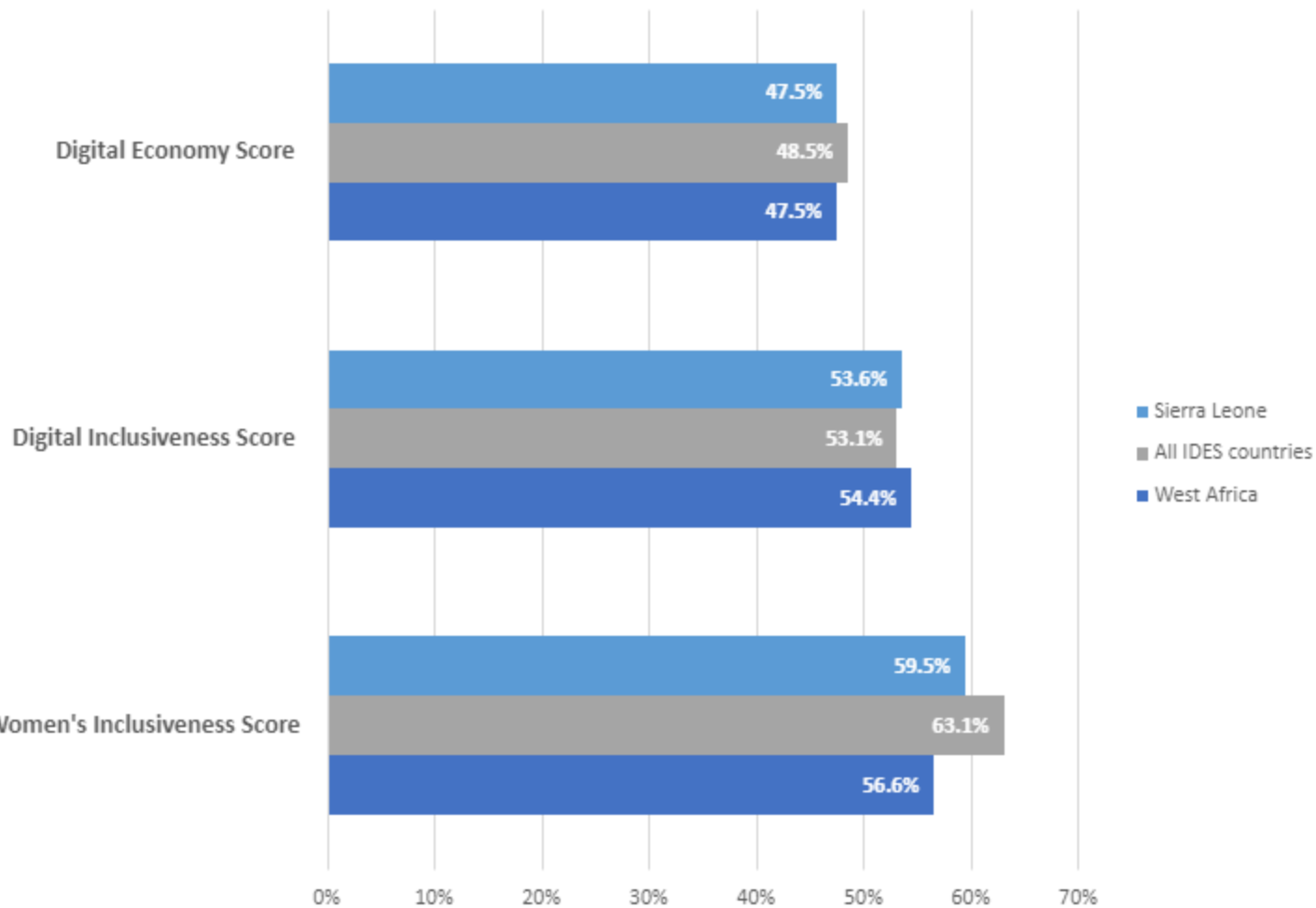
2022: 45%

2023: 48%



**Digital Economy
Score**

IDES Benchmarking: DES, DIS and WIS



Overview



Impact Capital
for Development

The Digital Economy Score (DES) (%)

indicates the level of development of the digital economy.

The Digital Inclusiveness Score (DIS) (%)

indicates the level of inclusion attained of key segments of the population

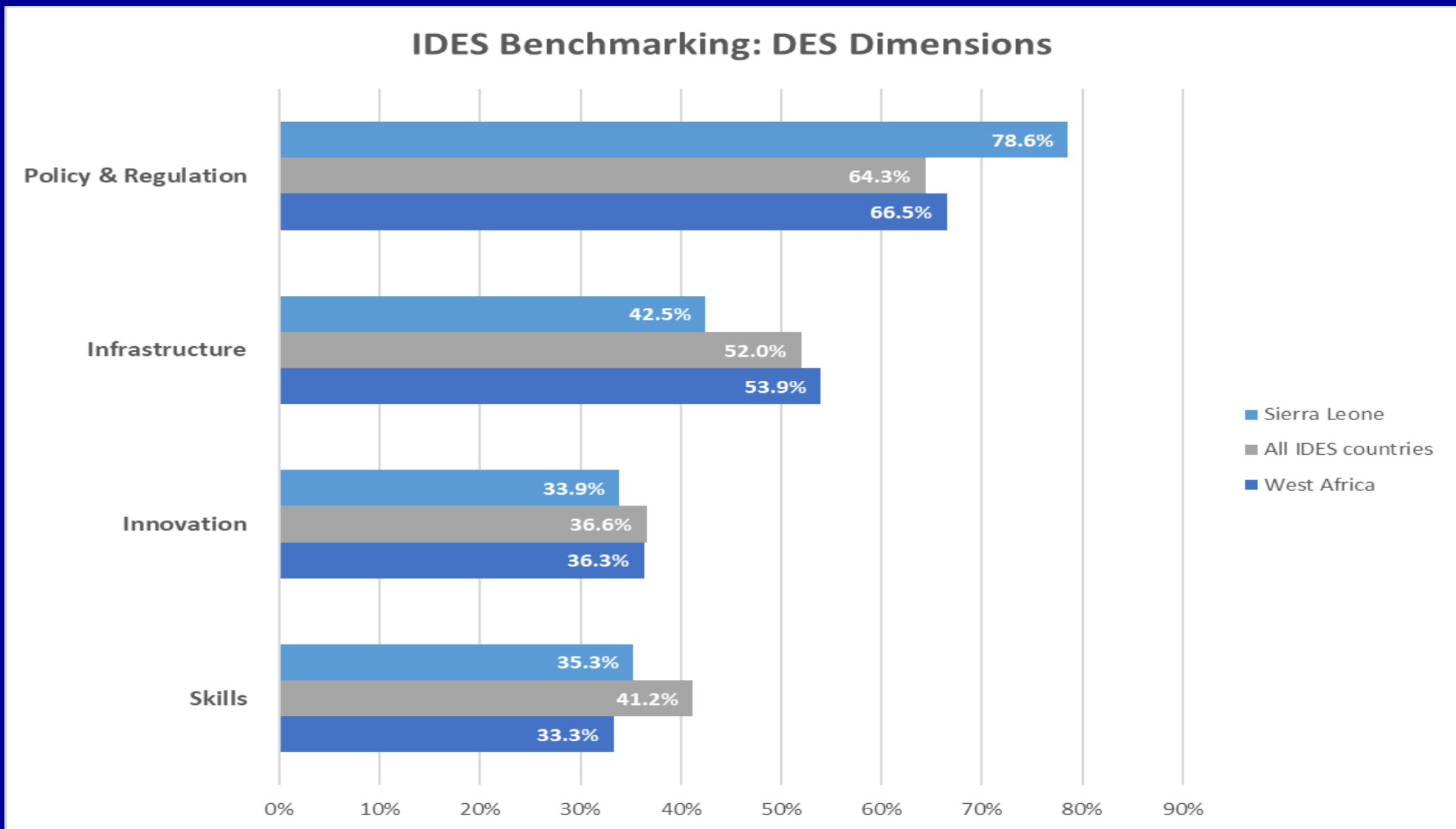
The Women Inclusiveness Score (WIS) (%)

indicates the level of inclusion of women.

IDES 2023 Sierra Leone: DES Dimensions Benchmarking



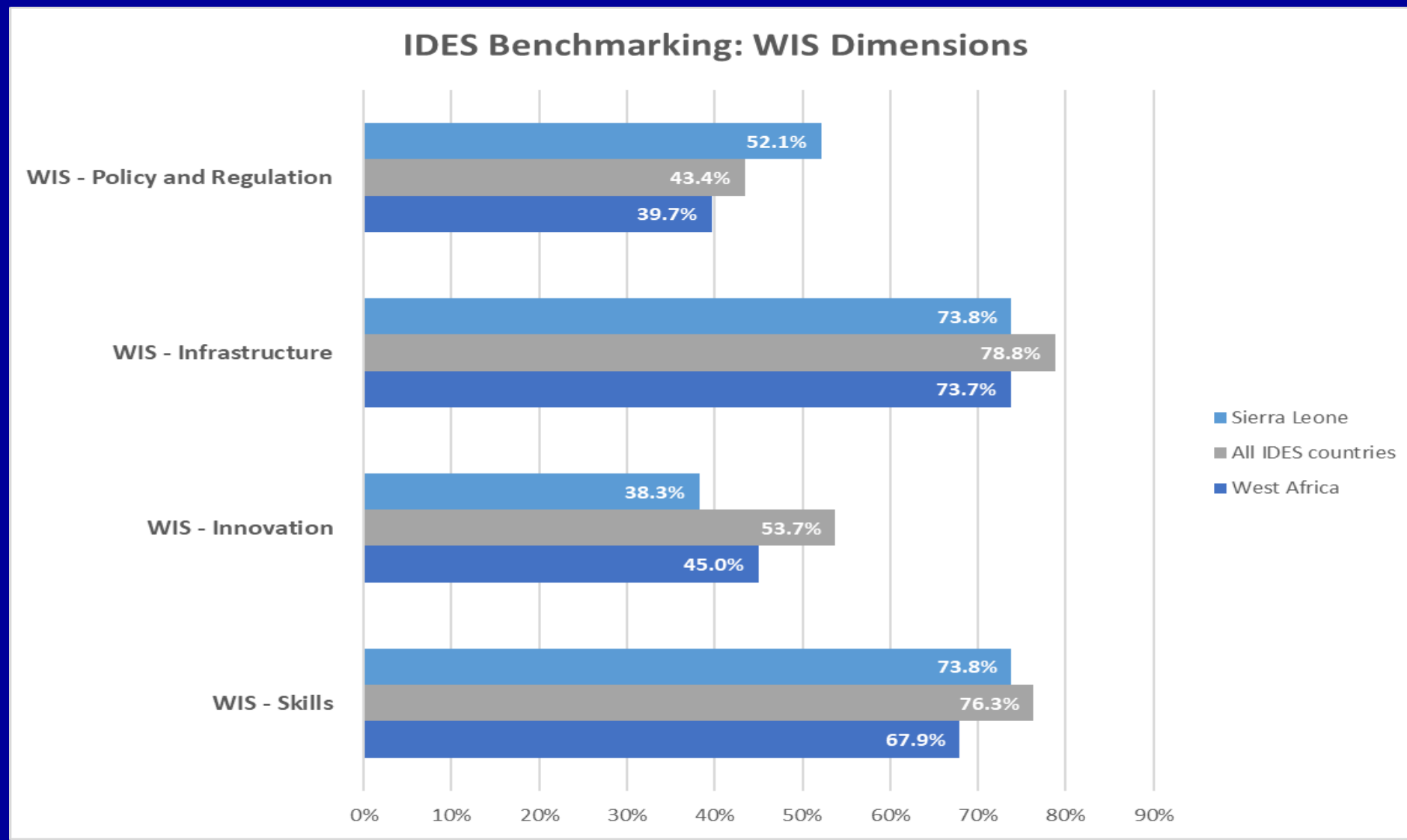
Impact Capital
for Development



IDES 2023 Sierra Leone: WIS Dimensions Benchmarking



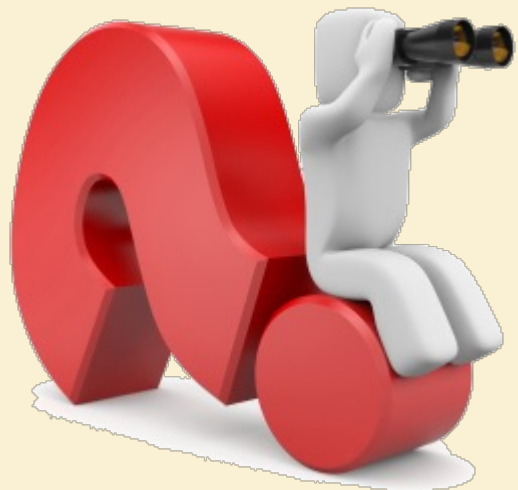
Impact Capital
for Development



Suggested Reforms _ IDES 2023



Impact Capital
for Development



**Policy &
Regulation (79%)**

- Venture Capital Startup Bill
- ETC



**Infrastructure
(42%)**

- Invest in Mobile Money Ecosystem
- ETC



**Innovation
(34%)**

- Financial/Fintech Incubation Lab
- ETC



**Skills
(35%)**

- Run Nationwide Digital & Financial Literacy Programs
- ETC

Thank you!

Website: www.uncdf.org

Follow us
@UNCDF:



Questions?

