



UNDESA

Committee of Experts on
Public Administration



CEPA Strategy Guidance Note

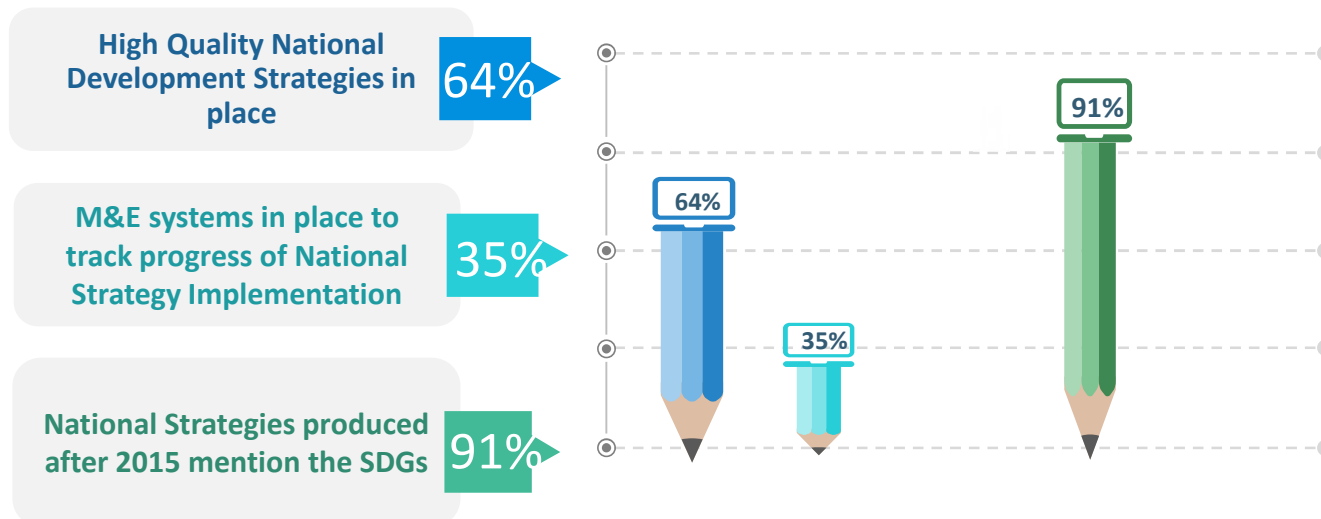
Monitoring and Evaluation Systems



Dr Dorothy Lucks
Executive Director
SDF Global Pty Ltd



M&E Systems for the SDGs



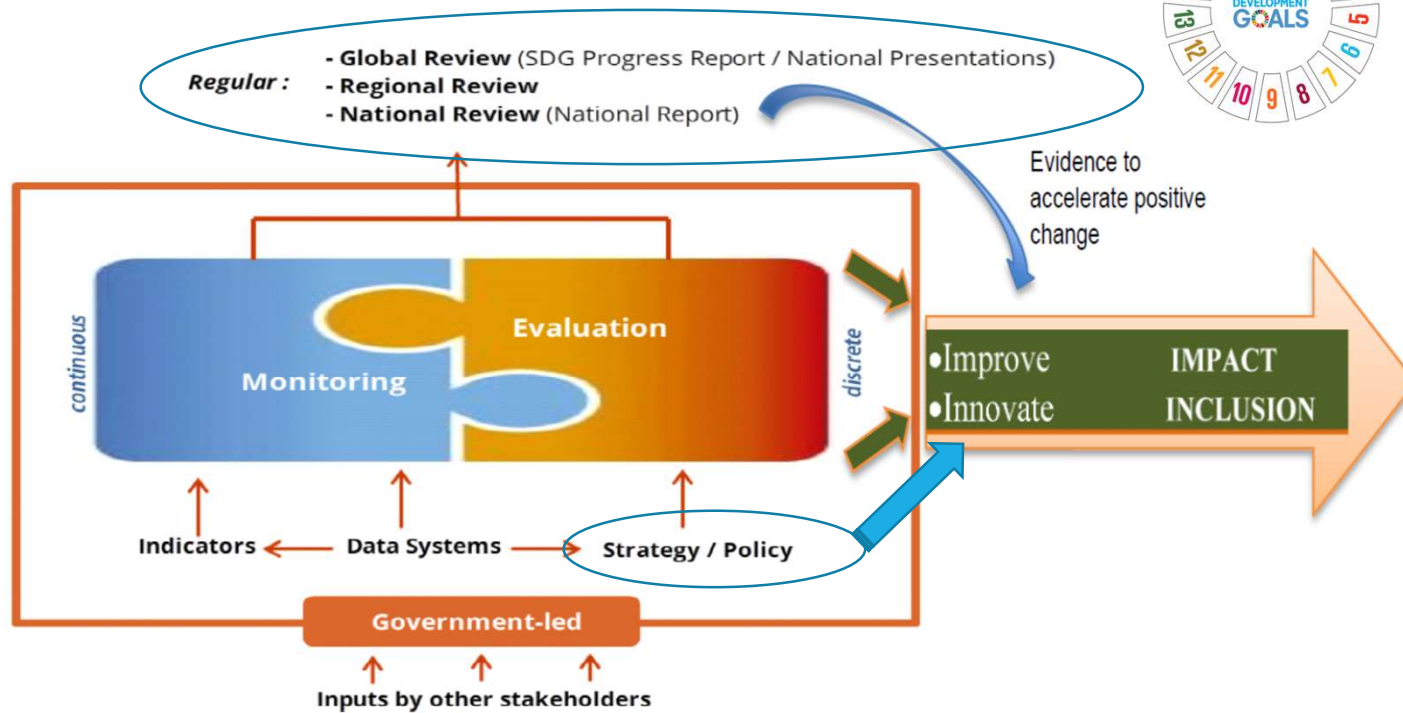
Good practice examples

Nepal – revised Constitution aligned to SDGs & M&E (2015)

Finland – SDG-related national evaluation every 4 years (2018).

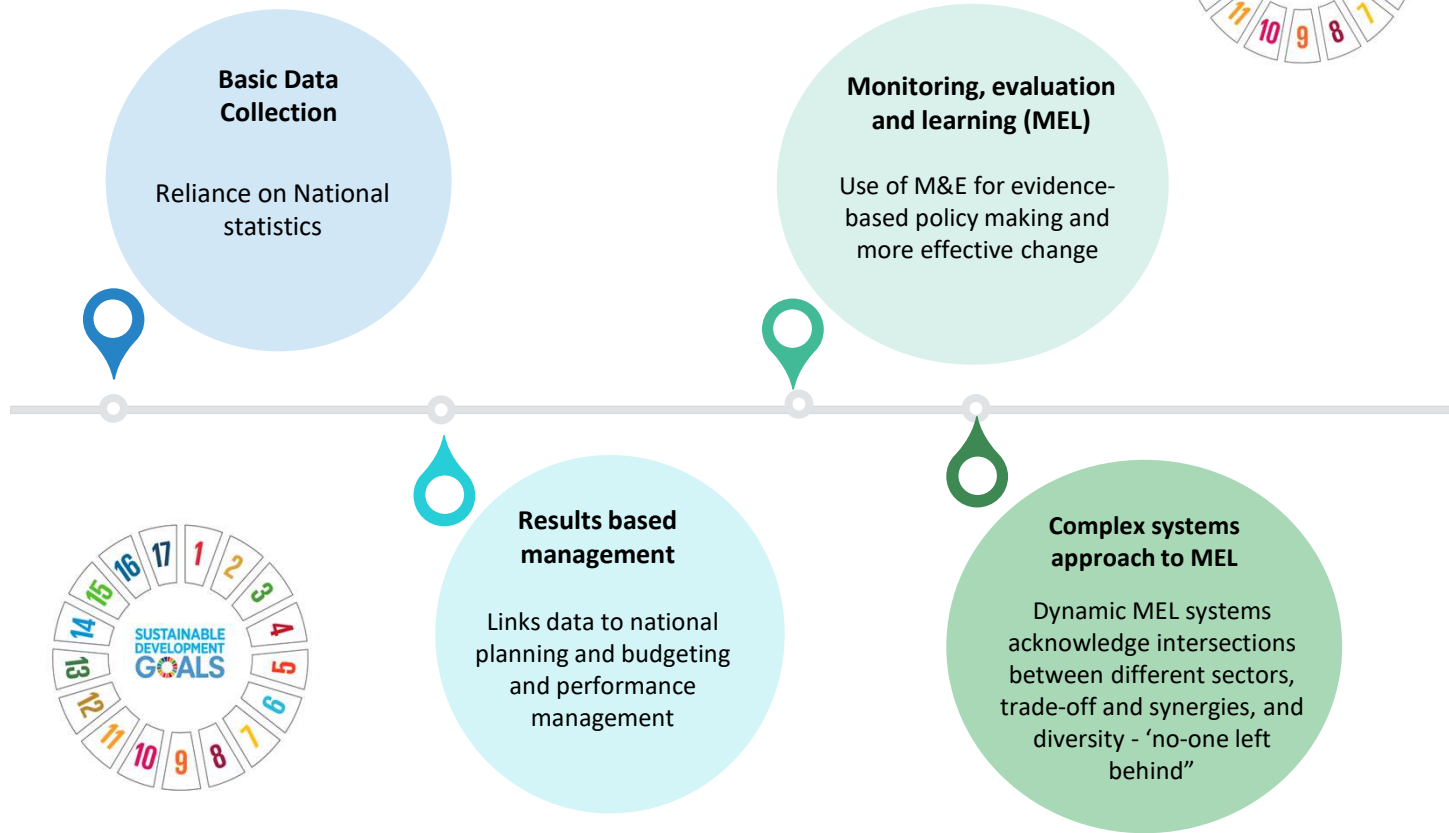
Data - Global Partnership for Effective Development Cooperation, 2018,2019

M&E Systems for SD Policy Impact



Source: Source: UNITAR-UNDG (2015) Preparing for Action National Briefing Package: The 2030 Agenda and SDGs adapted to illustrate the impact and acceleration of positive change.

M&E Sector evolution



Basic Data Collection

Reliance on National statistics

Monitoring, evaluation and learning (MEL)

Use of M&E for evidence-based policy making and more effective change

Results based management

Links data to national planning and budgeting and performance management

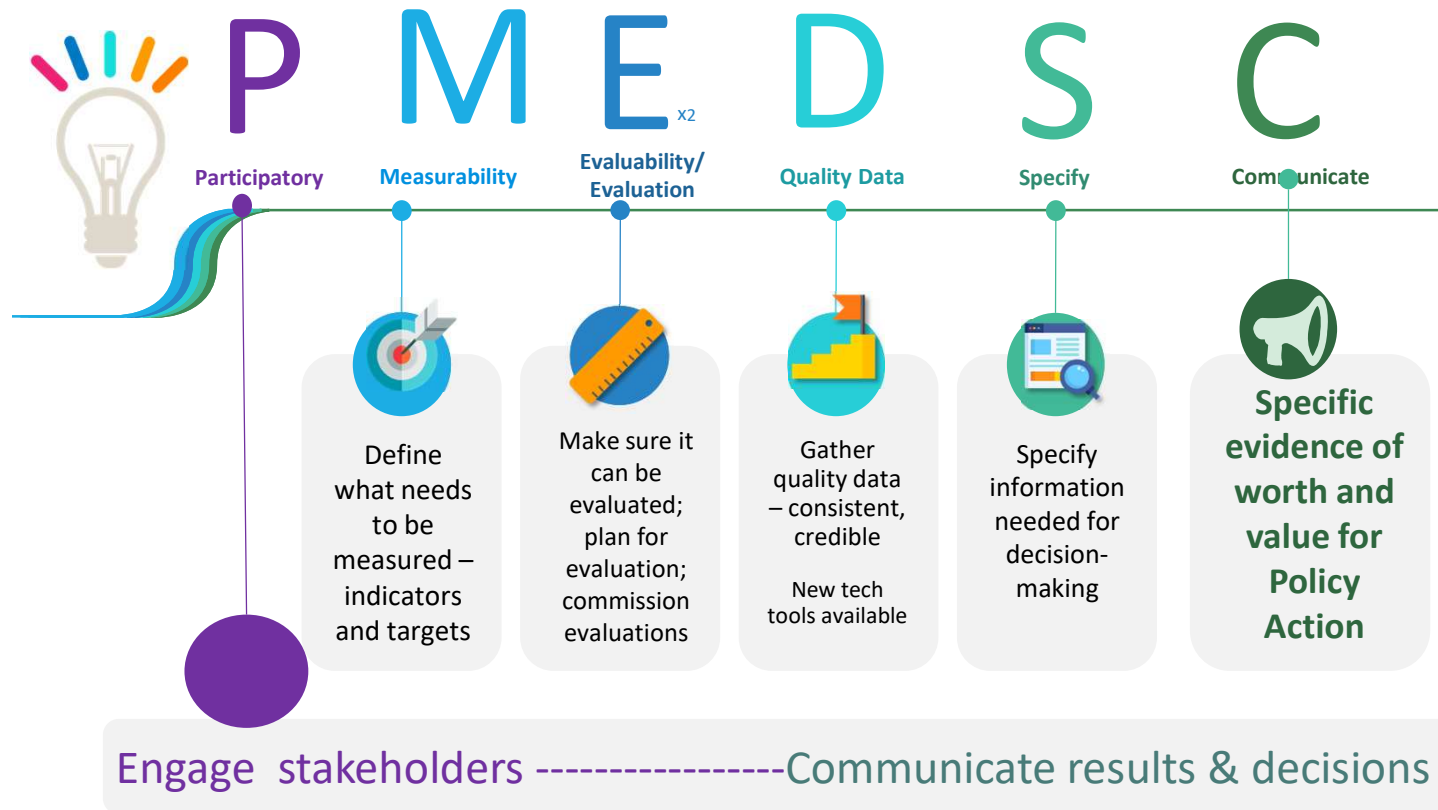
Complex systems approach to MEL

Dynamic MEL systems acknowledge intersections between different sectors, trade-off and synergies, and diversity - 'no-one left behind'



Methods of M&E Systems Implementation

7 – building blocks





Actions

What is **most important** to strengthen M&E systems for policy making



Assess M&E Systems

How effective are national M&E systems for policy making – are they set up for MEL and Good (Adaptive) Management.



Build M&E Capacity

Who has good M&E expertise, is it adequately deployed to strengthen national and local M&E systems. What opportunities are available to strengthen national M&E capacity.



Respond to new opportunities in M&E (MEL)

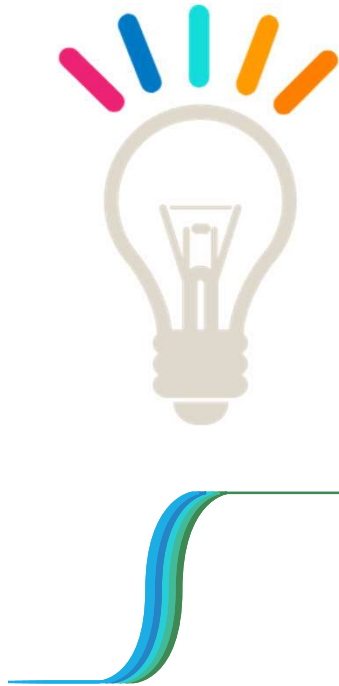
Update technology for data systems and analysis (e.g. remote sensing, digital mapping, big data, consultation and communication, using mobile phone tech, social media, etc.



Be proactive in communication with stakeholders

Be creative with multiple communication channels
Critical timelines for policy input
Include the voice of those left behind
Ensure Feedback Loops in place to test adaptive management actions





Thank you for
your time